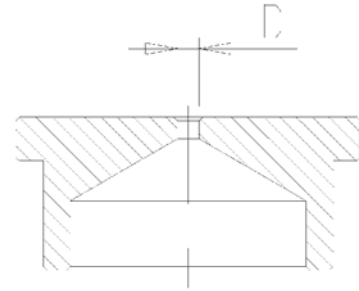
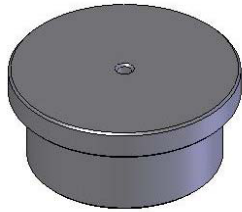


Soluzioni speciali / Special solution

Pastiglie strozzatrici / Flow restrictor



Descrizione Generale / General Description

Attraverso le pastiglie strozzatrici, montate tra due elementi modulari, possiamo ridurre la portata mandata verso gli elementi a valle dello strozzatore.

By means the flow restrictor, mounted between two elements of the modular directional control valve, we can reduce the flow rate in the elements after the orifice.

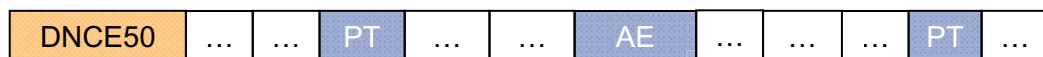
Dyser placeres mellem DNCE50 sektionerne i den gennemgående P og T kanal. Bemærk at det er alle efterfølgende sektioner der får reduceret flowet.

D (mm)
0.6
0.8
1
1.5
2
2.5
3

Vare nr. □

DO269059902R
DO269059903R
DO269059904R
DO269059905R

Istruzioni per l'ordinazione / Ordering instructions



Altre informazioni / Other information

€ Pastiglia strozzatrice D.. tra elementi ... / Flow restrictor D.. between ... elements